



Design roof exhaust
66014096



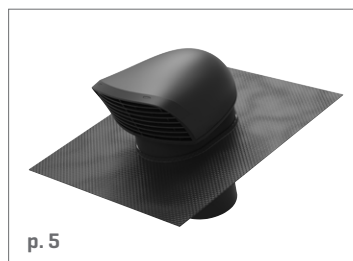
Design roof exhaust
66014097



Design roof exhaust for slate roofs
66014095



Design roof exhaust for flat roofs
66014262



Design roof exhaust Flex
66014150



Design roof exhaust XL
66014152



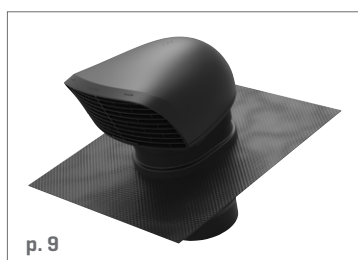
Design roof exhaust XL
66014154



Design roof exhaust XL for slate roofs
66014153



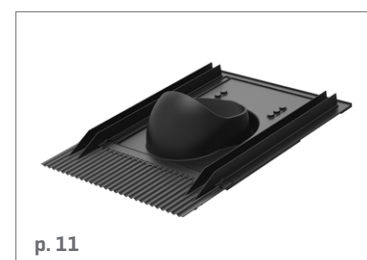
*Design roof exhaust XL
for flat roofs - 66014263*



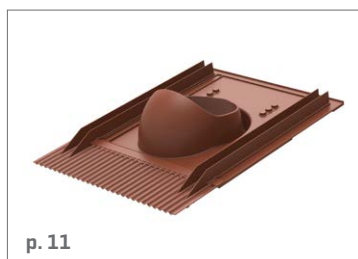
Design roof exhaust Flex XL
66014151



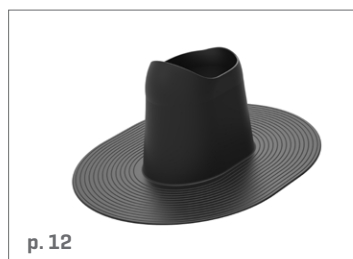
Roof supply All Weather
76050402



Universal roof tile
66032302



Universal roof tile
66032303



Felt pass through flat roof
66032304



EPDM collar
66032305

PRODUCT CHARACTERISTICS

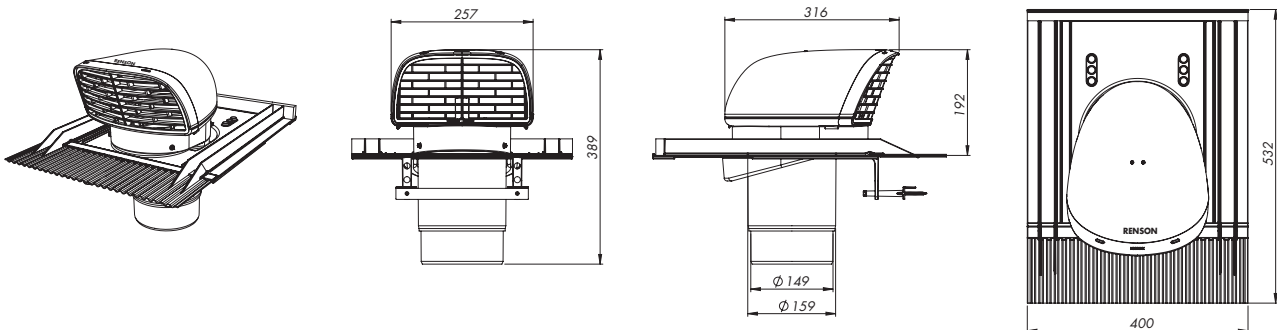
- Low pressure drop:
 - 14 Pa at 250 m³/h
 - 30 Pa at 375 m³/h
- Connection diameter: 150/160 mm
- Material: polypropylene RAL 9005 or RAL 8004
 - Weather- and shockproof
 - Recyclable
 - Resists constant temperatures between -30 °C and 80 °C
 - UV-protected
- Built-in with universal roof tile
 - Lead replacement material
 - Possibility for different angles of inclination
 - Compatible with most types of roof tiles
- Aesthetic design
- Exhaust parallel with the roof [less fouling]
- Removable louvre for cleaning, if necessary
- Dimensions:
 - Roof exhaust: 316 x 257 x 389 mm [L x W x H]
 - Universal roof tile: 532 x 400 mm [L x W]



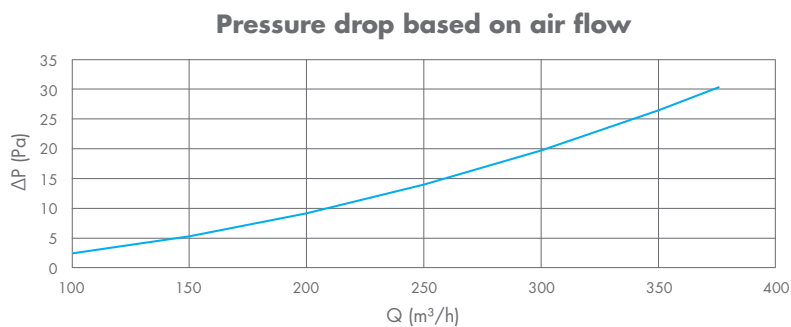
66014096



66014097



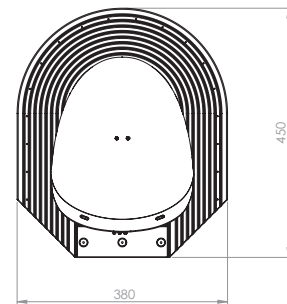
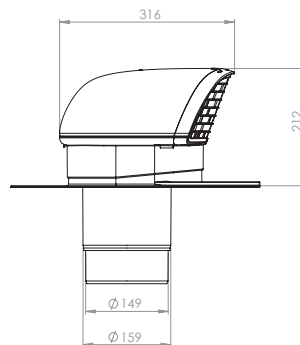
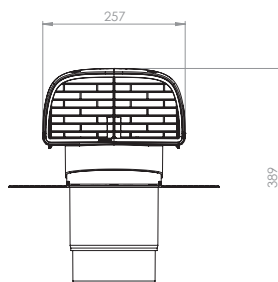
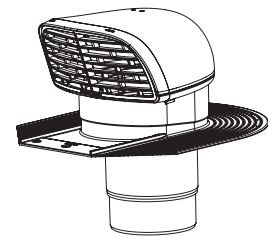
CURVE PRESSURE DROP (exhaust)



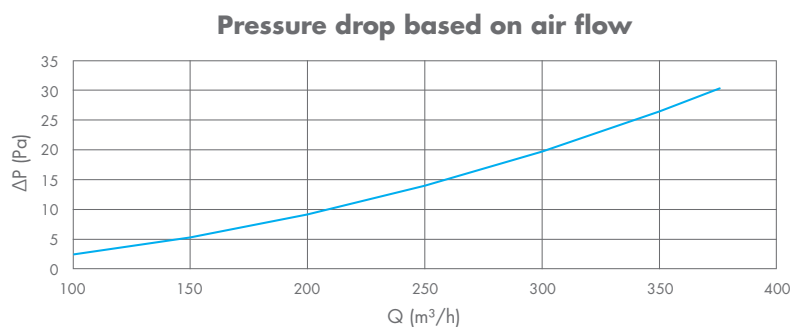
Q [m ³ /h]	Δp [Pa]
100	2,5
150	5,3
200	9,2
250	14
300	19,8
350	26,6
375	30,3

PRODUCT CHARACTERISTICS

- Low pressure drop:
 - 14 Pa at 250 m³/h
 - 30 Pa at 375 m³/h
- Connection diameter: 150/160 mm
- Material: polypropylene RAL 9005
 - Weather- and shockproof
 - Recyclable
 - Resists constant temperatures between -30 °C and 80 °C
 - UV-protected
- Built-in with slate roof tile
 - Lead replacement material
 - Possibility for different angles of inclination
- Aesthetic design
- Exhaust parallel with the roof (less fouling)
- Removable louvre for cleaning, if necessary
- Dimensions:
 - Roof exhaust: 316 x 257 x 389 mm [L x W x H]
 - Slate roof tile: 450 x 380 mm [L x W]



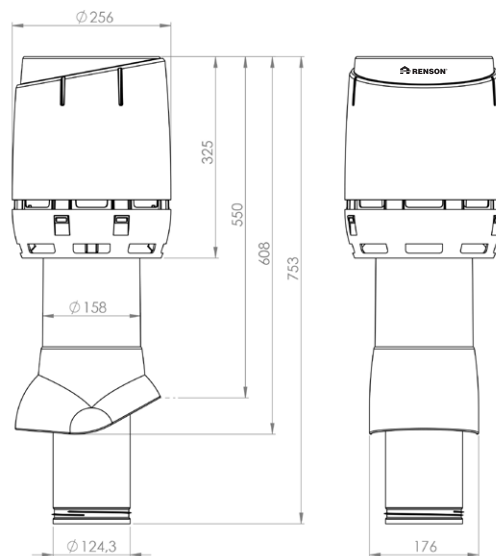
CURVE PRESSURE DROP (exhaust)



Q [m ³ /h]	Δp [Pa]
100	2,5
150	5,3
200	9,2
250	14
300	19,8
350	26,6
375	30,3

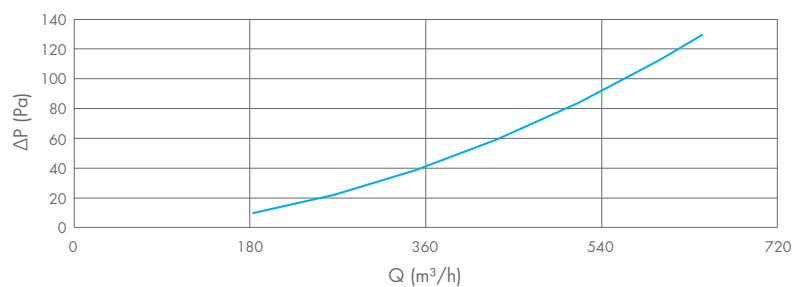
PRODUCT CHARACTERISTICS

- Low pressure drop
- Connection diameter: 125 mm
- Material: polypropylene RAL 9005
 - Weather- and shockproof
 - Recyclable
 - Resists constant temperatures between -30 °C and 80 °C
 - UV-protected
- Insulated with polyurethane and Styrofoam
- For flat roofs with an angle of inclination up to 11,5°
- Compatible with the EPDM collar (66032305) for flat EPDM roofs
- Built-in spirit level for a perfect installation
- Aesthetic design with internal mechanism against water penetration
- Removable top part for cleaning, if necessary
- Dimensions: 256 x 753 mm [W x H]



CURVE PRESSURE DROP [exhaust]

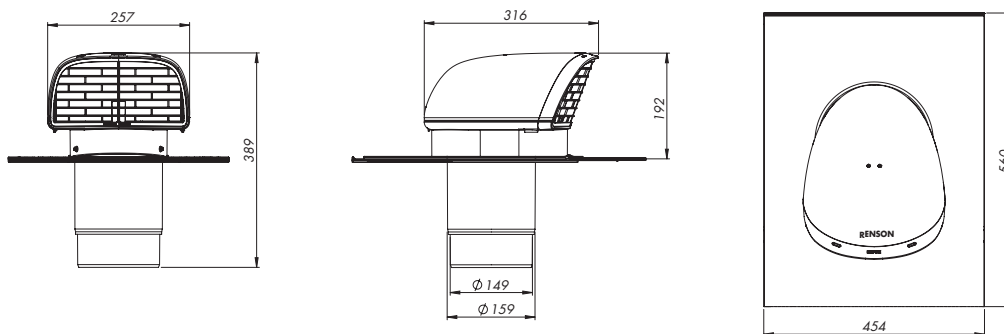
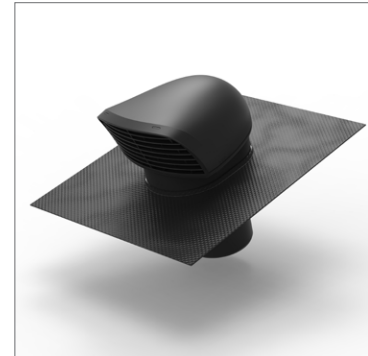
Pressure drop based on air flow *



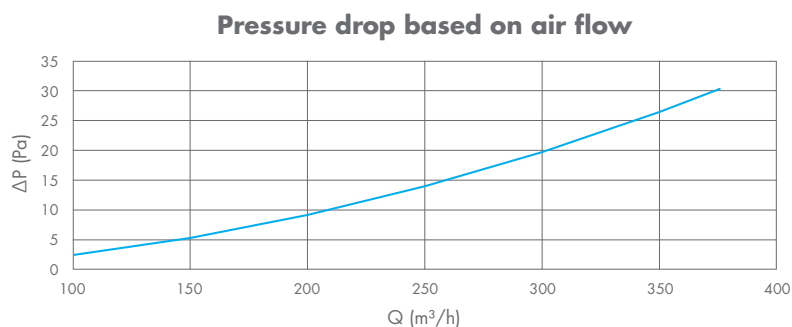
* Provisional results

PRODUCT CHARACTERISTICS

- Low pressure drop:
 - 14 Pa at 250 m³/h
 - 30 Pa at 375 m³/h
- Connection diameter: 150/160 mm
- Material: polypropylene RAL 9005
 - Weather- and shockproof
 - Recyclable
 - Resists constant temperatures between -30 °C and 80 °C
 - UV-protected
- Built-in with a fierce lead-free flexible slab:
 - Lead replacement based on silicone with aluminium reinforcement
 - Remains strong and sustainable within a big range of temperatures: -30 °C/+180 °C
 - UV-resistant
 - Does not react with roofing and does not cause stripes
 - Faster to process than lead or other lead replacement materials
 - Easy to crease by hand or by lead beaters
 - Harmless for people and environment and light weighted
- Aesthetic design
- Exhaust parallel with the roof [less fouling]
- Removable louvre for cleaning, if necessary
- Dimensions:
 - Roof exhaust: 316 x 257 x 389 mm [L x W x H]
 - Flexible slab: 560 x 454 mm [L x W]



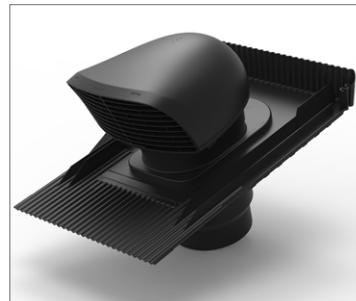
CURVE PRESSURE DROP (exhaust)



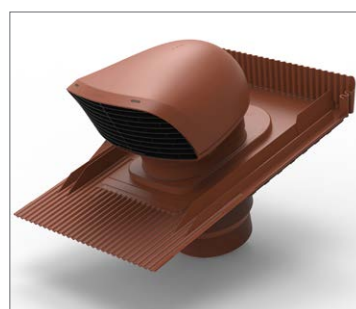
Q [m ³ /h]	Δp [Pa]
100	2,5
150	5,3
200	9,2
250	14
300	19,8
350	26,6
375	30,3

PRODUCT CHARACTERISTICS

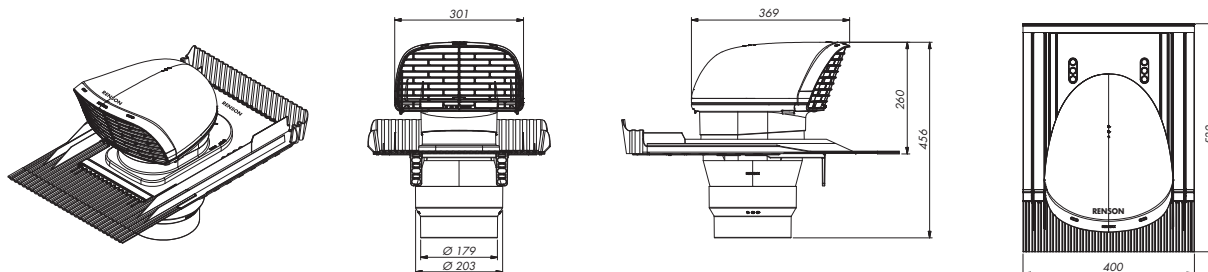
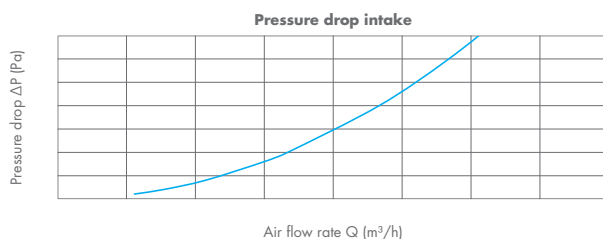
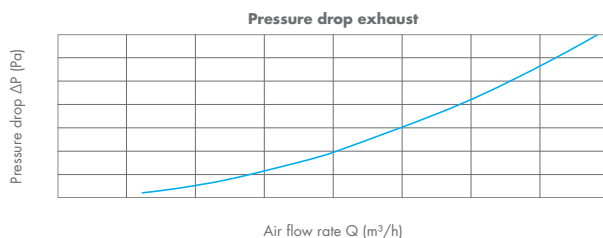
- Low pressure drop:
 - Exhaust: 10 Pa at 404 m³/h - 20 Pa at 584 m³/h
 - Intake: 10 Pa at 334 m³/h - 20 Pa at 467 m³/h
- Connection diameter: 180/200 mm
- Material: polypropylene RAL 9005 or RAL 8004
 - Weather- and shockproof
 - Recyclable
 - Resists constant temperatures between -30 °C and 80 °C
 - UV-protected
- Built-in with universal roof tile
 - Lead replacement material
 - Possibility for different angles of inclination
 - Compatible with most types of roof tiles
- Aesthetic design
- Exhaust parallel with the roof [less fouling]
- Removable louvre for cleaning, if necessary
- Dimensions:
 - Roof exhaust: 369 x 301 x 456 mm [L x W x H]
 - Universal roof tile: 532 x 400 mm [L x W]



66014152



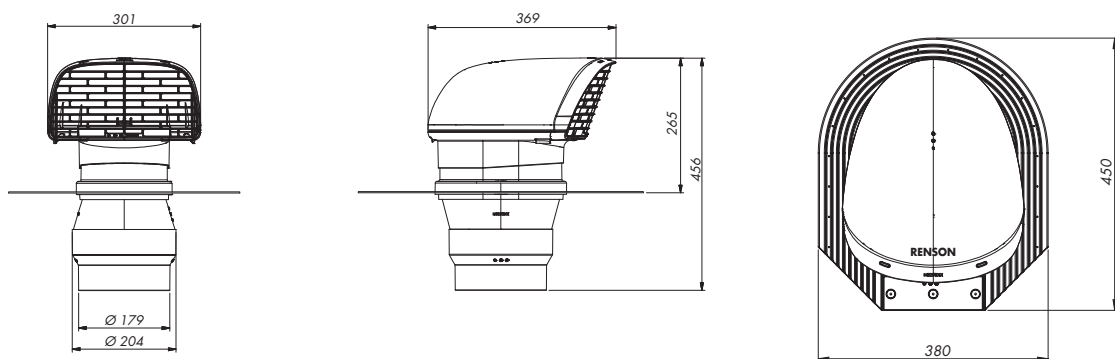
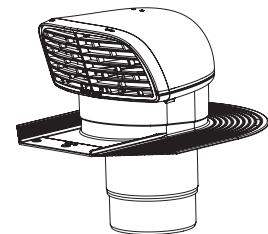
66014154


CURVES PRESSURE DROP [exhaust-intake]


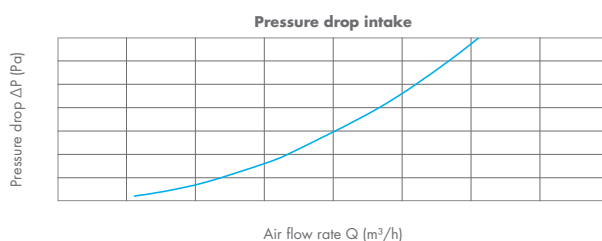
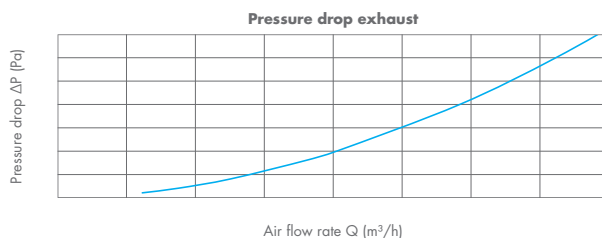
Δp [Pa]	Intake Q [m ³ /h]	Exhaust Q [m ³ /h]
1	110	120
2	153	173
4	214	249
8	300	359
10	334	404
20	467	584
30	568	723

PRODUCT CHARACTERISTICS

- Low pressure drop:
 - Exhaust: 10 Pa at 404 m³/h - 20 Pa at 584 m³/h
 - Intake: 10 Pa at 334 m³/h - 20 Pa at 467 m³/h
- Connection diameter: 180/200 mm
- Material: polypropylene RAL 9005
 - Weather- and shockproof
 - Recyclable
 - Resists constant temperatures between -30 °C and 80 °C
 - UV-protected
- Built-in with slate roof tile
 - Lead replacement material
 - Possibility for different angles of inclination
- Aesthetic design
- Exhaust parallel with the roof [less fouling]
- Removable louvre for cleaning, if necessary
- Dimensions:
 - Roof exhaust: 369 x 301 x 456 mm [L x W x H]
 - Slate roof tile: 450 x 380 mm [L x W]



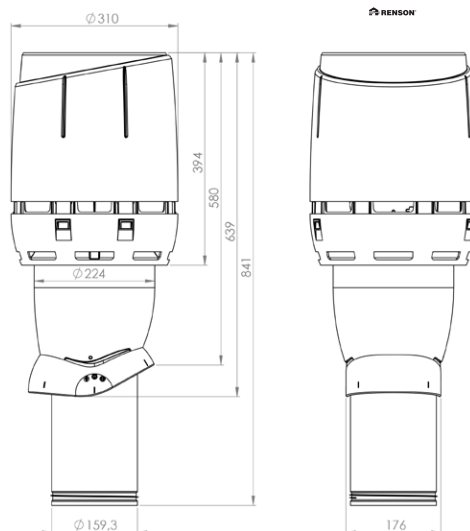
CURVES PRESSURE DROP (exhaust-intake)



Δp [Pa]	Intake Q [m ³ /h]	Exhaust Q [m ³ /h]
1	110	120
2	153	173
4	214	249
8	300	359
10	334	404
20	467	584
30	568	723

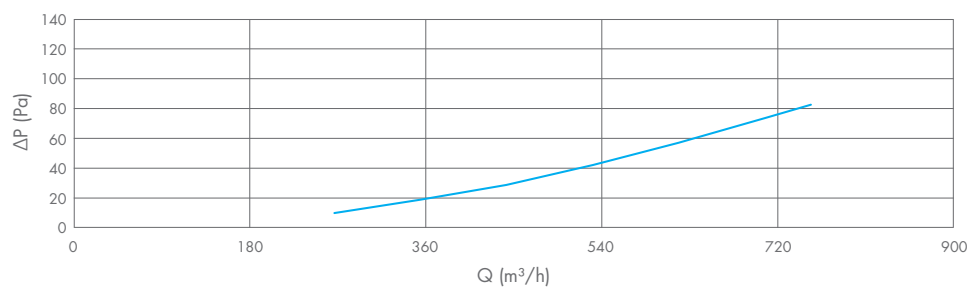
PRODUCT CHARACTERISTICS

- Low pressure drop
- Connection diameter: 160 mm
- Material: polypropylene RAL 9005
 - Weather- and shockproof
 - Recyclable
 - Resists constant temperatures between -30 °C and 80 °C
 - UV-protected
- Insulated with polyurethane and Styrofoam
- For flat roofs with an angle of inclination up to 11,5°
- Compatible with the EPDM collar (66032305) for flat EPDM roofs
- Built-in spirit level for a perfect installation
- Aesthetic design with internal mechanism against water penetration
- Removable top part for cleaning, if necessary
- Dimensions: 310 x 841 mm [W x H]



CURVE PRESSURE DROP [exhaust]

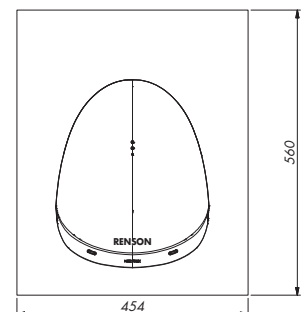
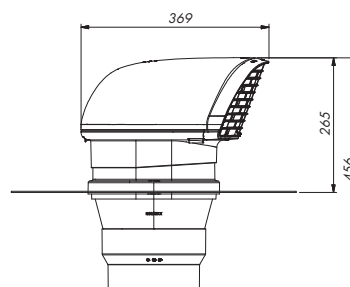
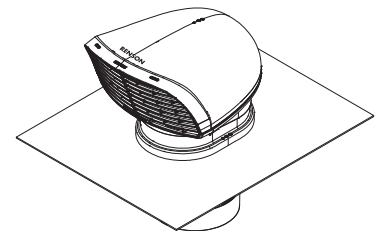
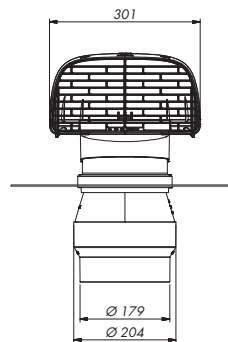
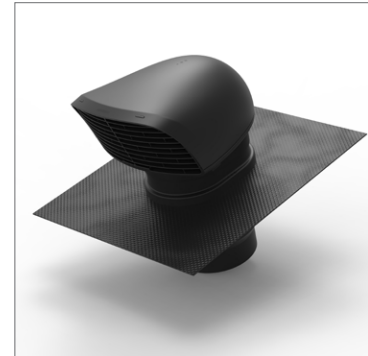
Pressure drop based on air flow *



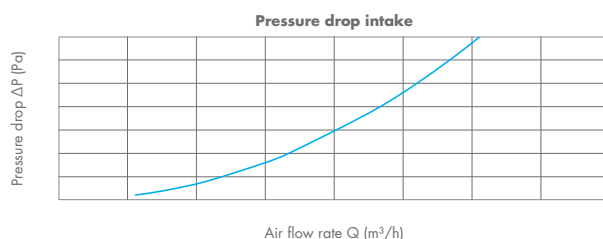
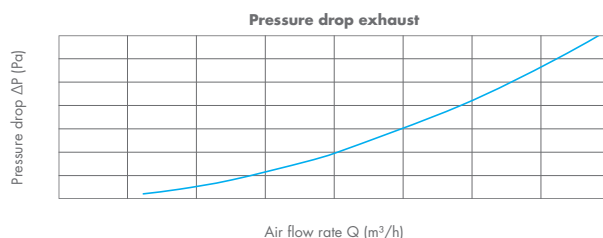
* Provisional results

PRODUCT CHARACTERISTICS

- Low pressure drop:
 - Exhaust: 10 Pa at 404 m³/h - 20 Pa at 584 m³/h
 - Intake: 10 Pa at 334 m³/h - 20 Pa at 467 m³/h
- Connection diameter: 180/200 mm
- Material: polypropylene RAL 9005
 - Weather- and shockproof
 - Recyclable
 - Resists constant temperatures between -30 °C and 80 °C
 - UV-protected
- Built-in with a fierce lead-free flexible slab:
 - Lead replacement based on silicone with aluminium reinforcement
 - Remains strong and sustainable within a big range of temperatures: -30 °C/+180 °C
 - UV-resistant
 - Does not react with roofing and does not cause stripes
 - Faster to process than lead or other lead replacement materials
 - Easy to crease by hand or by lead beaters
 - Harmless for people and environment and light weighted
- Aesthetic design
- Exhaust parallel with the roof [less fouling]
- Removable louvre for cleaning, if necessary
- Dimensions:
 - Roof exhaust: 369 x 301 x 456 mm [L x W x H]
 - Flexible slab: 560 x 454 mm [L x W]



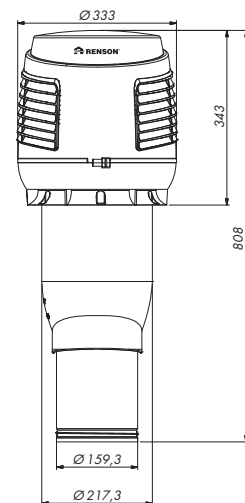
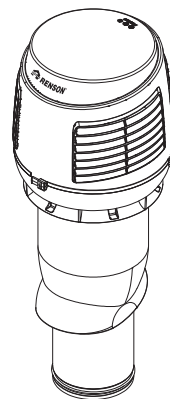
CURVES PRESSURE DROP (exhaust-intake)



Δp [Pa]	Intake Q [m ³ /h]	Exhaust Q [m ³ /h]
1	110	120
2	153	173
4	214	249
8	300	359
10	334	404
20	467	584
30	568	723

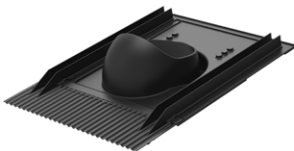
PRODUCT CHARACTERISTICS

- Water repellent roof supply: according to EN13030:2001, class A at 3 m/s
- Low pressure drop:
 - Exhaust: 10 Pa at 281 m³/h - 30 Pa at 494 m³/h
 - Intake: 10 Pa at 180 m³/h - 60 Pa at 456 m³/h
- Connection diameter: 160 mm
- Material: polypropylene RAL 9005
 - Weather- and shockproof
 - Recyclable
 - Resists constant temperatures between -30 °C and 80 °C
 - UV-protected
- Built-in with the roof tiles mentioned below
 - Lead replacement material
 - Possibility for different angles of inclination
 - Compatible with most types of roof tiles
- Aesthetic design with internal mechanism against water penetration
- Removable top part for cleaning, if necessary
- Dimensions: 333 x 808 mm (W x H)

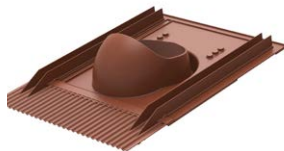


Installation only in combination with:

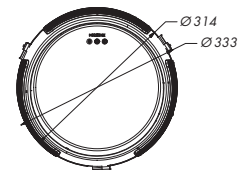
Black - 66032302



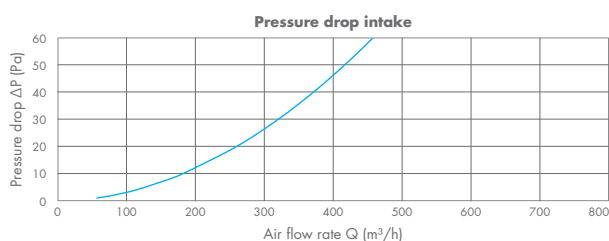
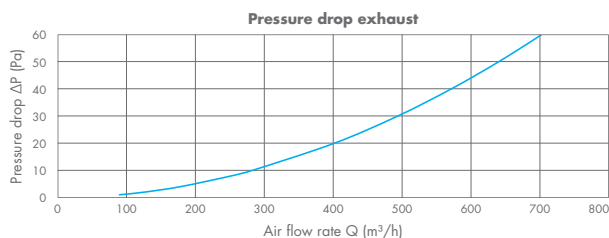
Terracotta - 66032303



Felt pass through - 66032304



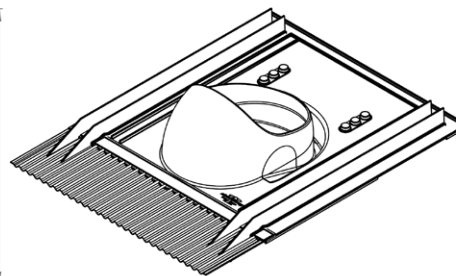
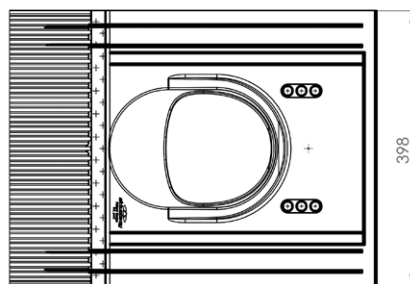
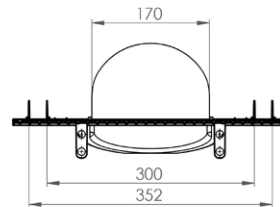
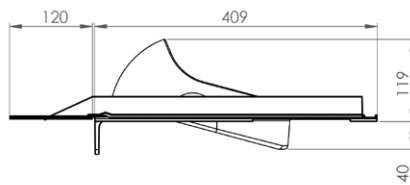
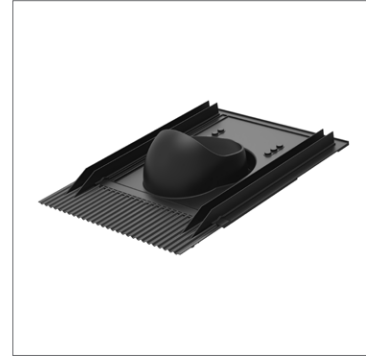
CURVES PRESSURE DROP (exhaust-intake)



Δp [Pa]	Intake Q [m ³ /h]	Exhaust Q [m ³ /h]
1	55	86
2	78	123
4	112	176
8	160	251
10	180	281
20	258	401
30	318	494
40	370	573
50	415	642
60	456	705

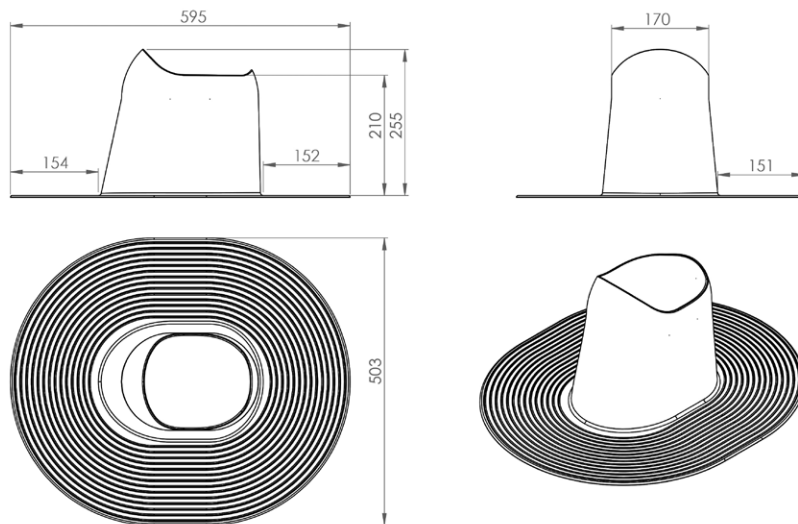
PRODUCT CHARACTERISTICS

- Material: polypropylene RAL 9005 or RAL 8004 and thermoplastic plastic
 - Weather- and shockproof
 - Recyclable
 - Resists constant temperatures between -30 °C and 80 °C
 - UV-protected
- Universal roof tile for all roofs with clay, ceramic and concrete tiles
- Installation with the Roof supply All Weather [76050402]
- Aesthetic design
- Dimensions: 532 x 400 x 255 mm [L x W x H]



PRODUCT CHARACTERISTICS

- Material: polypropylene RAL 9005
 - Weather- and shockproof
 - Recyclable
 - Resists constant temperatures between -30 °C and 80 °C
 - UV-protected
- For flat roofs with an angle of inclination up to 11,5°
- Compatible with the EPDM collar [66032305] for flat EPDM roofs
- Easy installation with the Roof supply All Weather [76050402]
- Aesthetic design
- Dimensions: 595 x 503 x 200 mm [L x W x H]



PRODUCT CHARACTERISTICS

- Material: black EPDM rubber
 - Weather- and shockproof
 - Waterproof for flat EPDM roofs
- Aesthetic design
- Easy installation
- Dimensions: 488 x 583 mm (W x H)
- Compatible with
 - Felt pass through flat roof [66032304]
 - Design roof exhaust for flat roofs [66014262]
 - Design roof exhaust XL for flat roofs [66014263]

